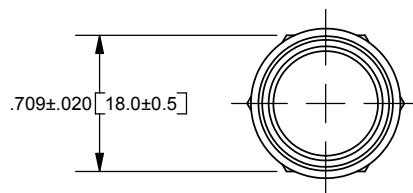


REV	DATE	ECO	DESCRIPTION	BY	CK	APP
-	10-25-05	NA	INITIAL RELEASE	LDB	NA	NA

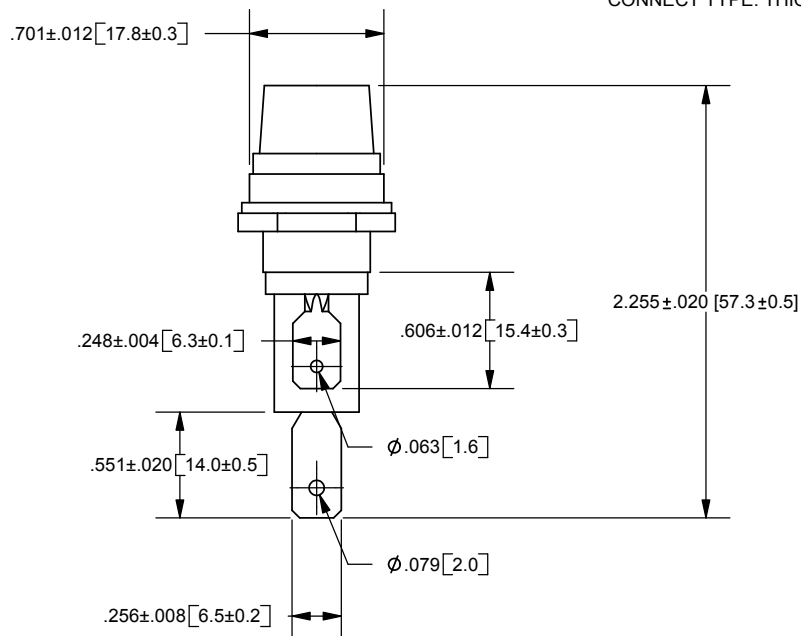
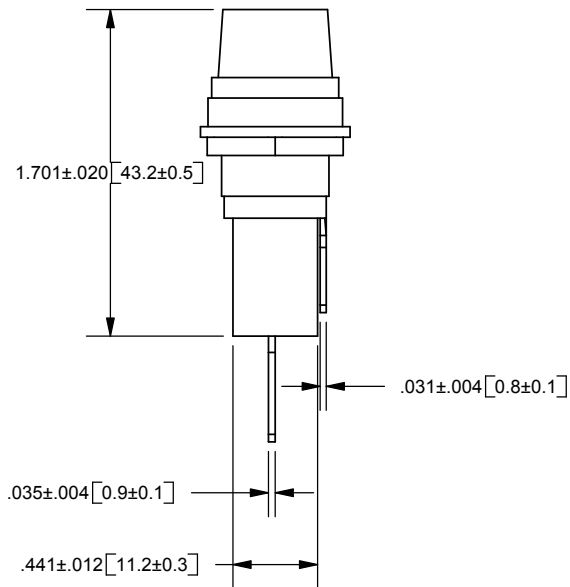


NOTES:

FUSE HOLDER PANEL MOUNT TYPE FOR 6.3X30mm AND 6.3X32mm FUSES

SPECIFICATIONS:

- * ELECTRICAL: RATED AT 15A 250V AC
- * INSULATING BODY: BAKELITE
- * KNOB: SCREW-IN STYLE FUSE EXTRACTOR TYPE WITH NICKEL-PLATED COPPER ALLOY
- * BOTTOM CONTACT: WITH SPRING
- * TERMINALS: NICKEL-PLATED COPPER ALLOY, QUICK-CONNECT TYPE. THICKNESS: 0.8mm



DIMENSIONS IN [] ARE MILLIMETERS



FERRAZ SHAWMUT INC.
374 MERRIMAC STREET
NEWBURYPORT, MA 01950

GPM-G8
FUSEHOLDER
6.3X30mm and 6.3X32mm
15A 250VAC

OUTLINE DIMENSIONS
NOT TO BE USED FOR PRODUCTION

701228

PRODUCT MANAGER
SIGN:
DATE:

DESIGN ENGINEER
SIGN:
DATE: